



# C3G EXCLUSIVE BATTLEFIELD

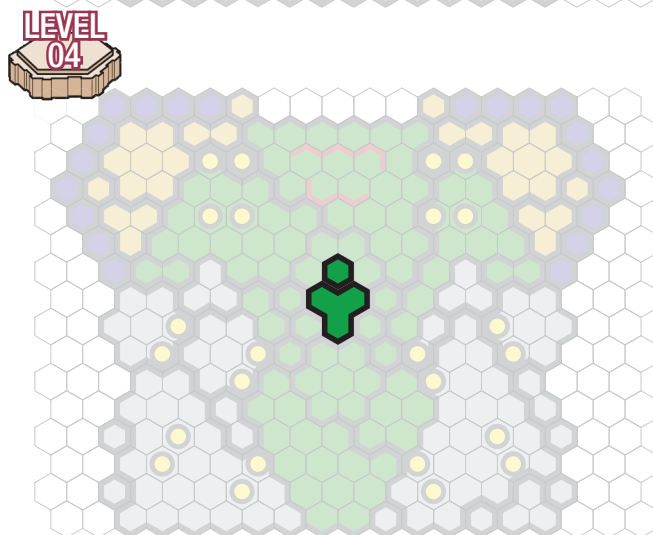
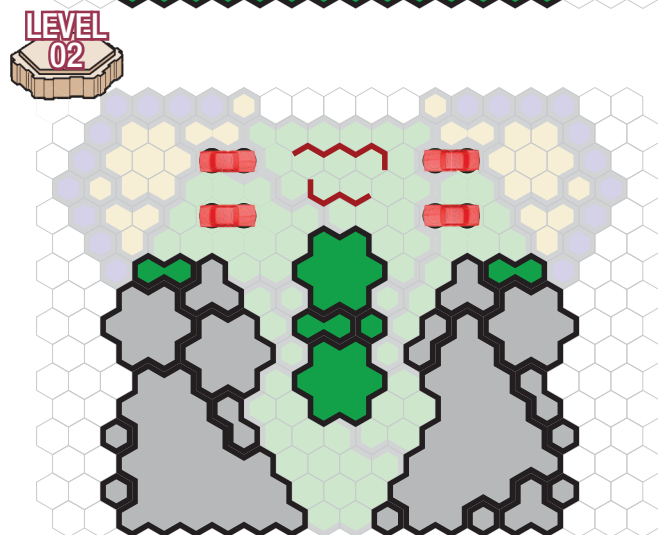
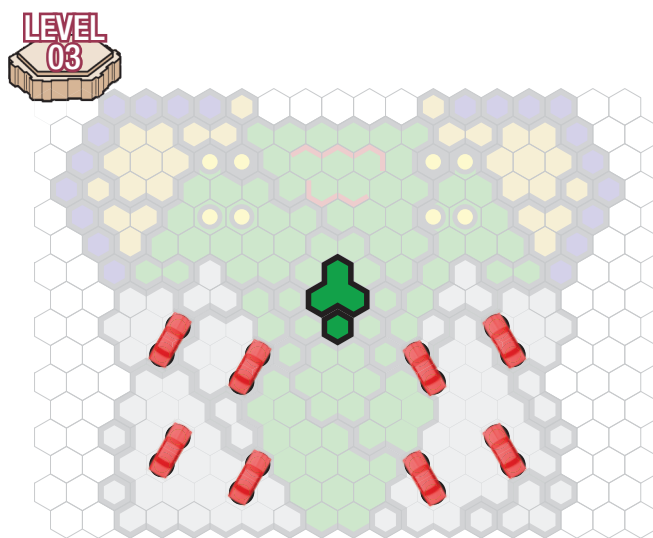
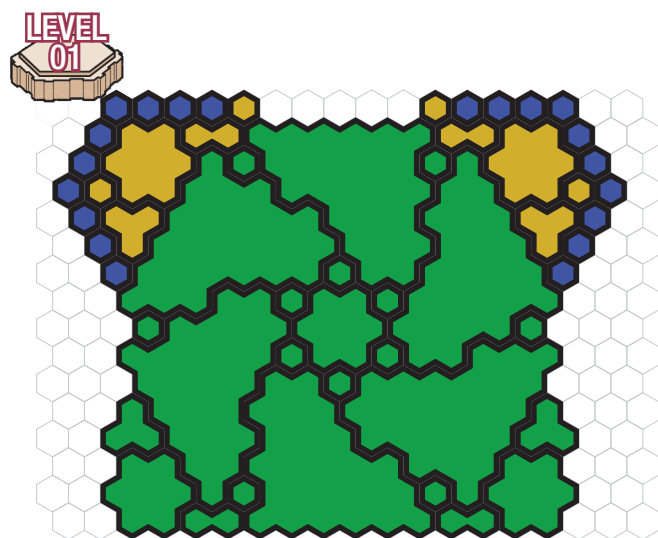
## JUNKYARD BATTLEFIELD

Required Sets:  
Rise of the Valkyrie™ Master Set

*The junkyard holds more than just scores of damaged vehicles. It also holds secrets. What secrets does this junkyard hold and are you willing to risk the car crusher to reveal them?*



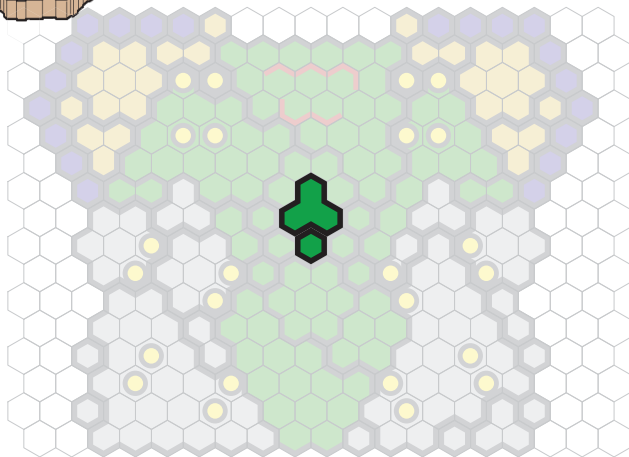
## Battlefield: Junkyard



# Battlefield: Junkyard



LEVEL  
05

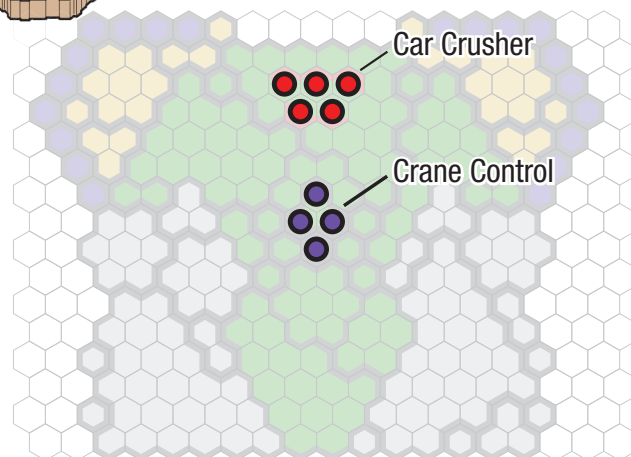


## SETUP

Place Parked Car Destructible Objects as indicated on Levels 02 and 03. Parked Car Destructible Object, Short Ruin Destructible Object and Long Ruin Destructible Object Army Cards (included in this PDF) are required for this battlefield.

## C3G EXCLUSIVE BATTLEFIELD

SPECIAL  
ZONES



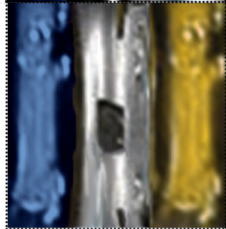
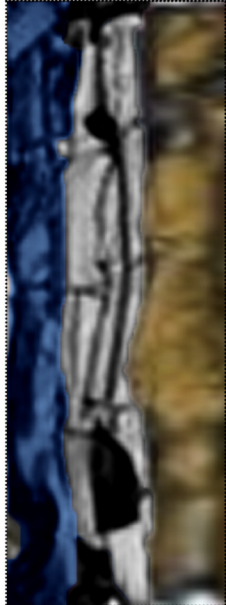
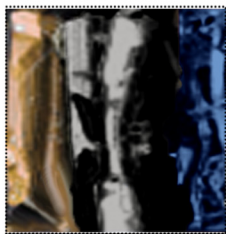
## SPECIAL RULES

### Crane Grabber:

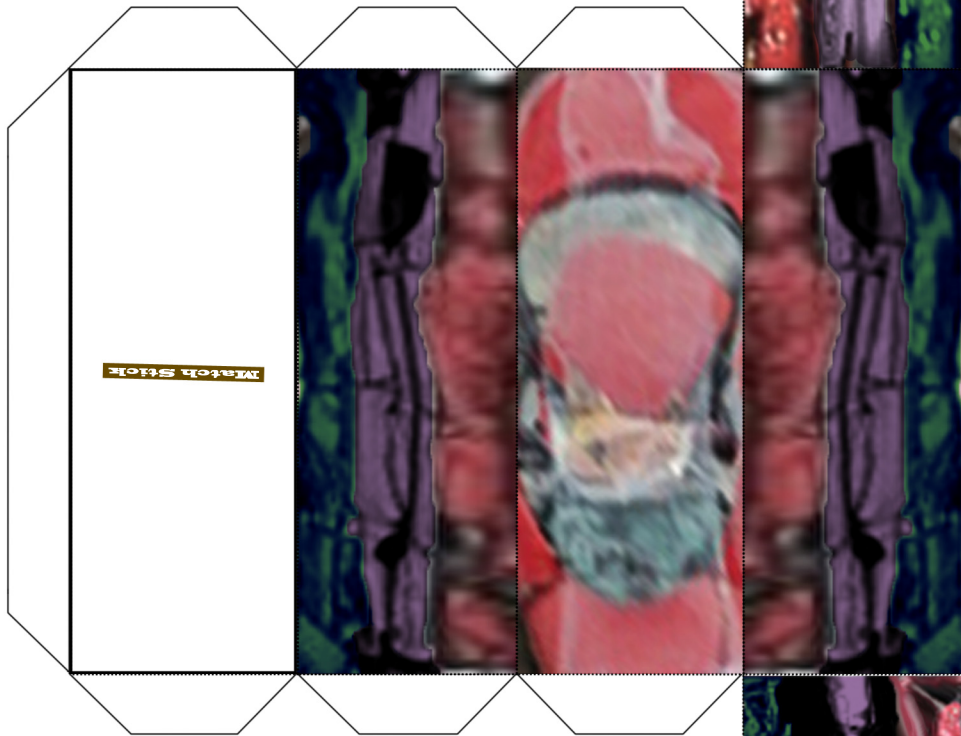
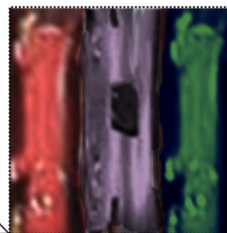
The purple spots are the Crane Control spaces. At the end of each round, before the Car Crusher crushes anyone, if a player has at least one unengaged figure on a Crane Control space and there are no opponent's figures on any other Crane Control space, that player may choose any small, medium, or large figure or destructible object on the battlefield and place it (and anything on top of it) on any unoccupied space on the battlefield.

### Car Crusher:

The area between the ruins is the car crusher. At the end of each round, if both ruins are on the battlefield, each figure between the ruins rolls an unblockable attack die.



Match Stick



Match Stick

