



CAITLIN SNOW

CRYOKINETIC PHYSIOLOGY

Start the game with this Army Card flipped to this side. Before rolling defense dice for Caitlin Snow against an attack from an enemy figure, you may flip this card.



METAHUMAN

UNIQUE HERO

SCIENTIST

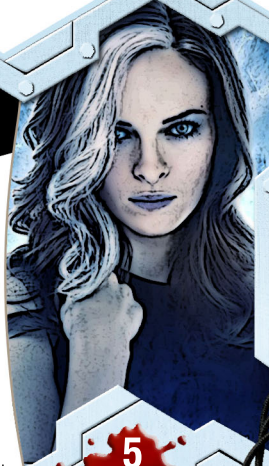
BRILLIANT

MEDIUM

5

TEAM FLASH PHYSICIAN 16

Before taking a turn with a Unique Hero you control adjacent to Caitlin Snow that is Human or Metahuman, you may roll the 20-sided die. Add 4 to your roll if that figure has the Superspeed or Speed Force special power. If you roll 16 or higher, remove up to 2 wounds from that figure's Army Card.



5
LIFE

MOVE 5

RANGE 1

ATTACK 2

DEFENSE 2

210

POINTS